



UROLIFT[®]

BPH Relief. In Sight.[™]

**OPEN UP TO A WHOLE NEW
APPROACH TO BPH**

UROLIFT®

First Line Treatment

The UroLift® System Treatment

A minimally invasive approach to treating BPH that lifts or holds the enlarged prostate tissue out of the way so it no longer blocks the urethra. There is no cutting, heating or removal of prostate tissue.

- **Immediate, visible result**
- **Rapid symptom relief**
- **No tissue removal or ablation**
- **Minimal downtime**
- **Preservation of sexual function**



Pre-Treatment

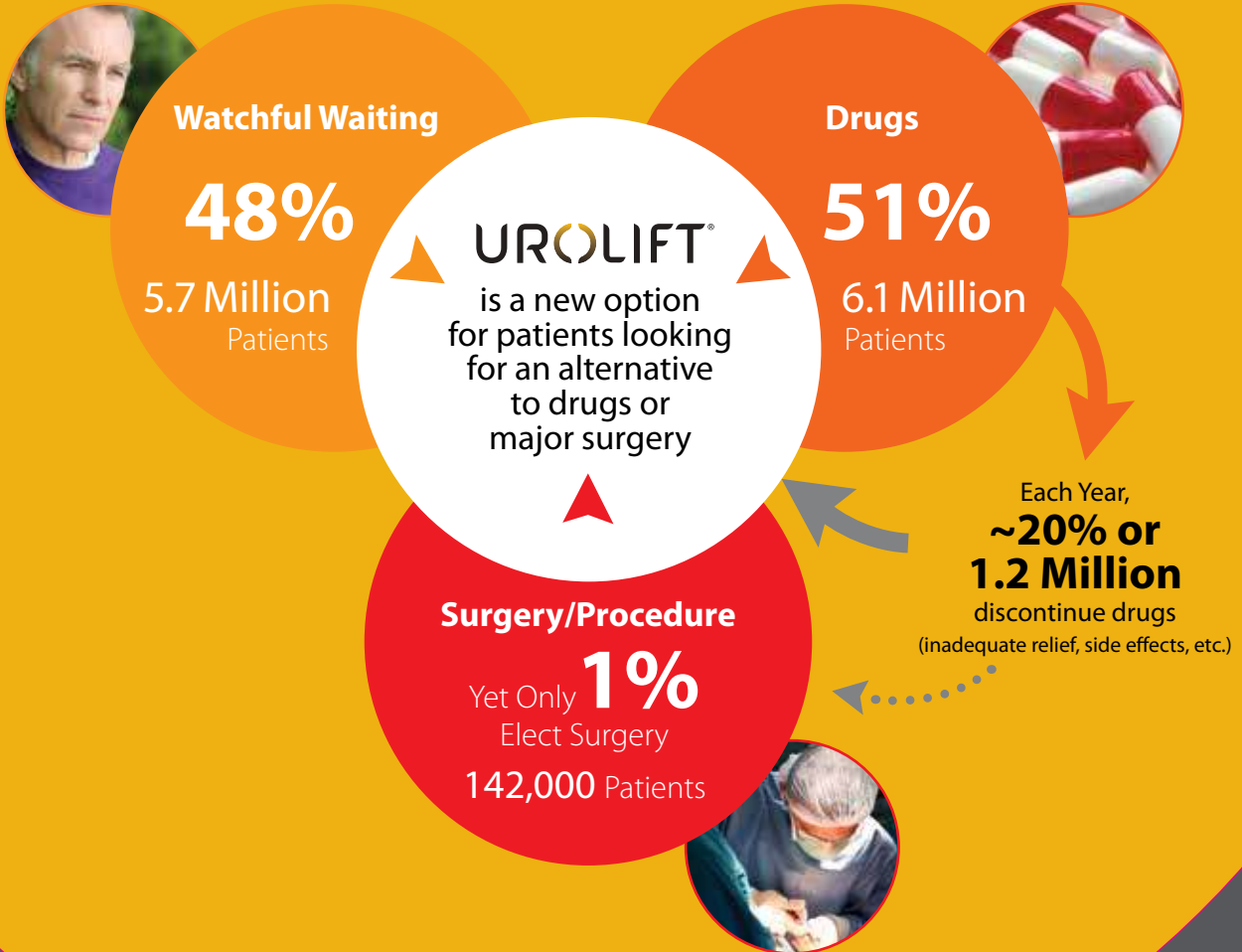


Post-Treatment

UROLIFT[®]

Redefining BPH Treatment

11.9 Million Men in the U.S. are Treated for BPH/LUTS



NeoTract US Market Model estimates for 2013
based on IMS Health Drug and Procedure data

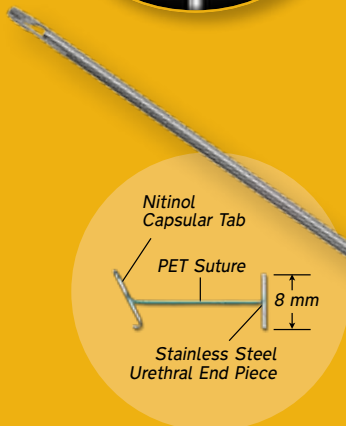
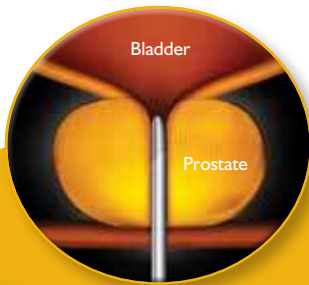
UROLIFT®

Straightforward Approach

The UroLift® Delivery Device is inserted transurethraly through a rigid sheath under cystoscopic visualization in order to reach the targeted area of obstruction.

The obstructing prostatic lobes are retracted by small permanent UroLift Implants which are deployed via a needle that comes out of the delivery device.

Each UroLift Delivery Device contains one UroLift Implant. Typically, 4-5 UroLift Implants are placed into the prostate.



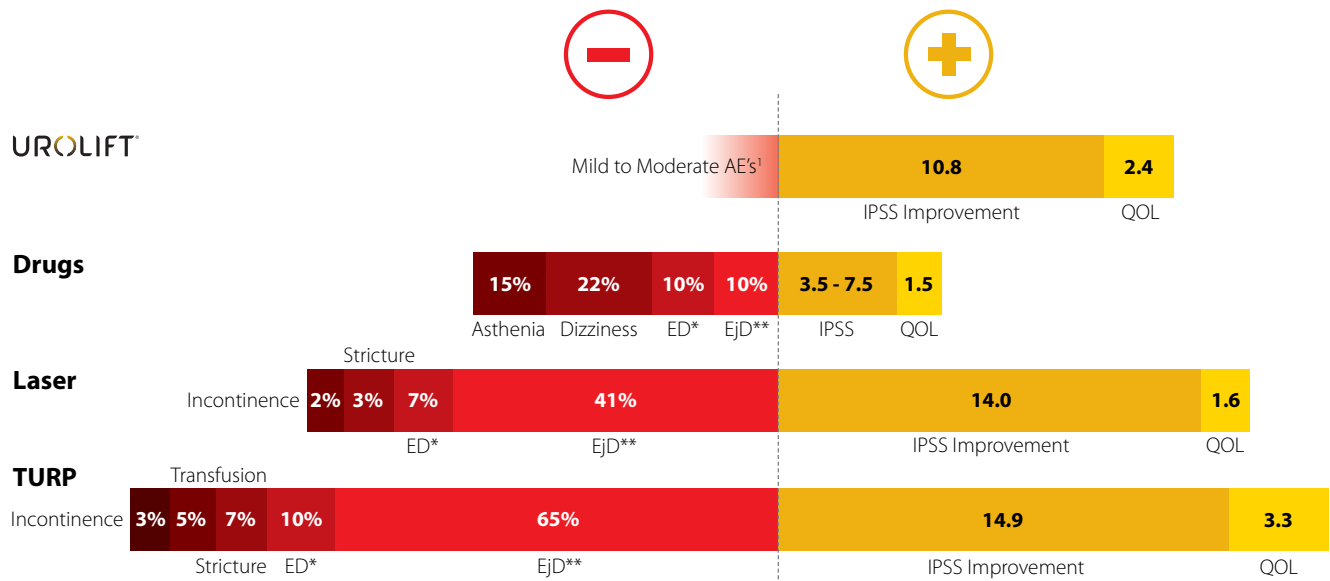
UroLift®
Permanent Implant



UroLift®
Delivery Device

UROLIFT®

Significant Improvement Without Significant Downsides



*ED – Erectile Dysfunction **EjD – Ejaculatory Dysfunction

Roehrborn, J Urology 2013; McNicholas, Eur Urology 2013; Chin, Urology 2012; EAU Guidelines 2011; AUA Guidelines 2010 and 2003

1. Most common adverse events reported include hematuria, dysuria, micturition urgency, pelvic pain, and urge incontinence. Most symptoms were mild to moderate in severity and resolved within two to four weeks after the procedure.

0% Ejaculatory Dysfunction

0% Erectile Dysfunction

No instances of de novo, sustained erectile or ejaculatory dysfunction.

UROLIFT®

Strong Clinical Results

- Endoscopic results can be immediately confirmed post-procedure.
- Patients may experience symptom relief as early as 2 weeks post-procedure.
- UroLift® System treatment does not preclude future UroLift, TURP or laser procedures.

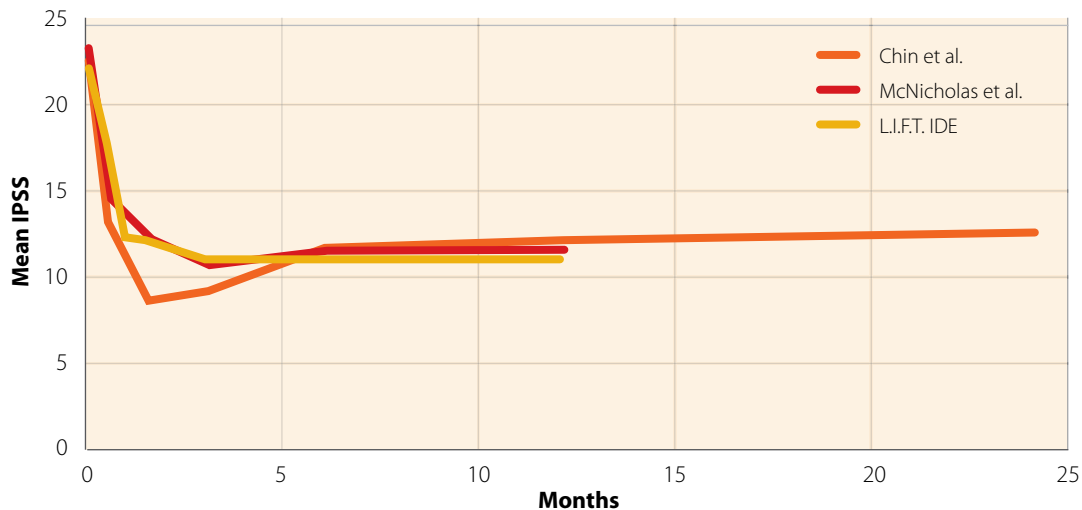


Canadian J. of Urology, Multi-Center Study (n=51) 2014
British J. Urology, Crossover Study (n=53) 2013
J. of Urology, L.I.F.T. Study (n=206, 1 yr) 2013
J. of Sexual Medicine, USA Sexual Function (n=140, 1 yr) 2013
EU J. of Urology, EU Registration (n=102, 1 yr) 2013
Archivos Españoles Urología, Spanish Study (n=20) 2013
Urology, 2 Year Multi-Center Study (n=64, 2 yr) 2012
J. Sexual Medicine, Preserves Sexual Function (n=64, 1 yr) 2012
Progrès en Urologie, Single Center French Study (n=4) 2012
Canadian J. of Urology, Technique (n=50) 2012
British J. Urology, First in Man (n=19, 1 yr) 2011

UROLIFT®

L.I.F.T. Study Results Corroborate Prior Studies

206-patient L.I.F.T. IDE Study, a multi-center, randomized, blinded study. All primary and secondary endpoints were met. Patients experienced rapid symptomatic improvement, increased urinary flow rates, preserved sexual function and a significant improvement in Quality of Life.



Chin et al.: Urology 2012; McNicholas et al.: European Urology 2013; Roehrborn et al.: Journal of Urology 2013

	3 Month Change from Baseline			12 Month
	UroLift	Control	Difference	UroLift
AUASI	11.1	5.9	0.003	10.8
Qmax (ml/s)	4.28	1.98	p =0.005	4.02
QOL	2.2	1.0	p <0.001	2.4
BPHII	3.9	2.1	p <0.001	4.0

No instances of de novo, sustained erectile or ejaculatory dysfunction

UROLIFT®

**For additional information and surgical videos
visit UroLift.com**

**Customer Service • 877.408.9628
Reimbursement Resource Center • 800.651.8247**

NeoTract, Inc. is dedicated to developing innovative, minimally invasive and clinically effective devices that address unmet needs in the field of urology. Our initial focus is to improve the standard of care for patients with Benign Prostatic Hyperplasia (BPH), a broadly underserved market. Our first product is the UroLift® System, a minimally invasive device designed to treat lower urinary tract symptoms (LUTS) due to BPH.

neotract®

NeoTract, Inc.,
4473 Willow Road, Suite 100
Pleasanton, CA 94588
Tel: (925) 401-0700 • (877) 408-9628
Fax: (925) 401-0699
www.neotract.com

© 2014 NeoTract, Inc. All rights reserved. Printed in the USA.

MAC00034-01 Rev B 02/2014