

ADVANTAGES OF INTERVENTIONAL UROLOGY PROCEDURES

- Office based and minimally invasive
- Home in the same day
- Quicker recovery times
- Very low complication risks
- No general anesthesia needed
- Multi-disciplinary approach
- Ease of scheduling

For UFE



The uterus is spared



No Incision or Scar



Treat the Entire Uterus and Multiple fibroids at once

The procedure usually lasts about 45 minutes with a 2-hour recovery. After the procedure, patients can return home on the same day. Patients can be moderately active immediately after the procedure and return to full activity after 7 days.

Fold-Line



GREATER BOSTON
UROLOGY™

TAKE THE NEXT STEP TOWARD RESTORED FUNCTION



Plymouth Center
51 Obery St.
Plymouth, MA 02360
Tel / Fax: 508-731-4800
GBU@ircenters.com



Framingham Center
161 Worcester Rd., Ste. 300
Framingham, MA 01701
Tel / Fax: 508-635-5352
GBU2@ircenters.com



www.ircenters.com

Fold-Line



IR CENTERS™
LEADING MINIMALLY INVASIVE HEALTHCARE

WOMEN'S HEALTH

OUR TEAM

Our Vascular Interventional Radiologists are National Leaders & Experts in the field of Embolization. The team has led numerous clinical trials, pioneering novel techniques for the treatment of several medical conditions, specifically evaluating Embolization and its application for many novel medical applications. For more information about our expert physicians, please visit our website.

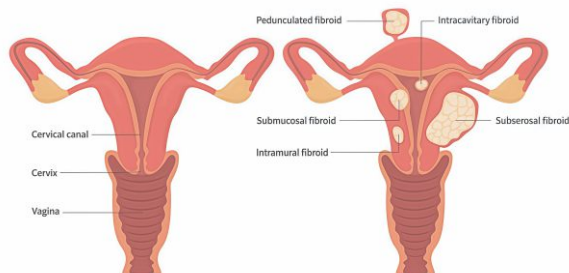


WHAT ARE UTERINE FIBROIDS?

Uterine fibroids are benign, non-cancerous growths in or on the walls of the uterus, or womb. They can range from less than an inch to more than six inches in diameter.

Most fibroids are asymptomatic and are only discovered when a woman has a routine pelvic examination.

UTERINE FIBROIDS



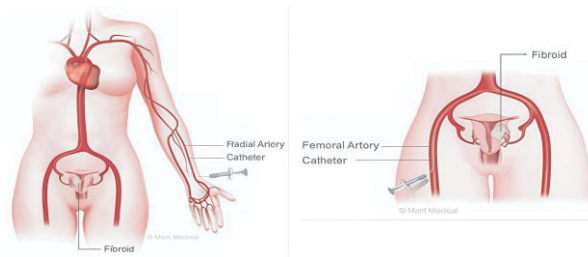
What Are Typical symptoms caused by Uterine Fibroids?

- ✔ Heavy, prolonged menstrual periods, sometimes with clots
- ✔ Pain or pressure between the hip bones or in the back of the legs
- ✔ Urinary Frequency
- ✔ Pain during sexual intercourse
- ✔ Constipation or bloating
- ✔ An enlarged belly and/or protruding abdomen

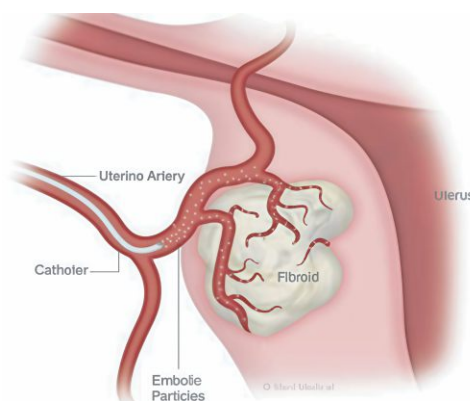
Uterine Fibroid Embolization

Procedural Details

- ✔ A tiny tube called a catheter is inserted into the femoral artery at the top of the leg or into the radial artery accessed through the wrist. The patient is under sedation or in a 'twilight sleep' during the procedure.



- ✔ The catheter is then guided into the left and right uterine artery using x-ray and a contrast dye to visualize and map the arteries feeding the fibroids.
- ✔ Tiny embolic particles are then injected through the catheter and into the uterine arteries that feed the fibroids, cutting off their blood supply
- ✔ With the blood supply blocked, the fibroids begin to shrink, but the uterus and ovaries are spared

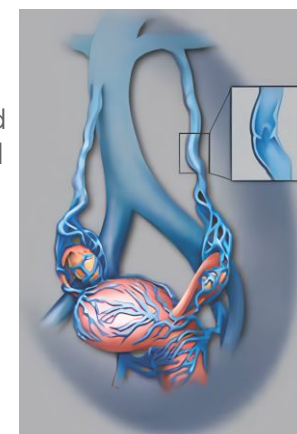


PELVIC CONGESTION SYNDROME

Pelvic congestion syndrome is a medical condition that causes chronic pelvic pain.

The condition is thought to be due to problems with the enlarged veins in your pelvic area. Women of childbearing age who have had more than one pregnancy may have the highest risk of pelvic congestion syndrome.

- ✔ Our team performs an office-based minimally invasive procedure called Ovarian Vein Embolization. This technique allows the physician to block, or embolize, the faulty vein by using X-ray to guide a catheter through the venous system.
- ✔ Once the vein is blocked, the damaged vein is shut off and the blood flow is redirected to the surrounding, healthier veins. Pressure is eased on the varicocele, restoring normal function and eliminating pain.
- ✔ Pressure is eased on the 'abnormal vein' restoring normal function and eliminating pain.



Fold-Line

Fold-Line